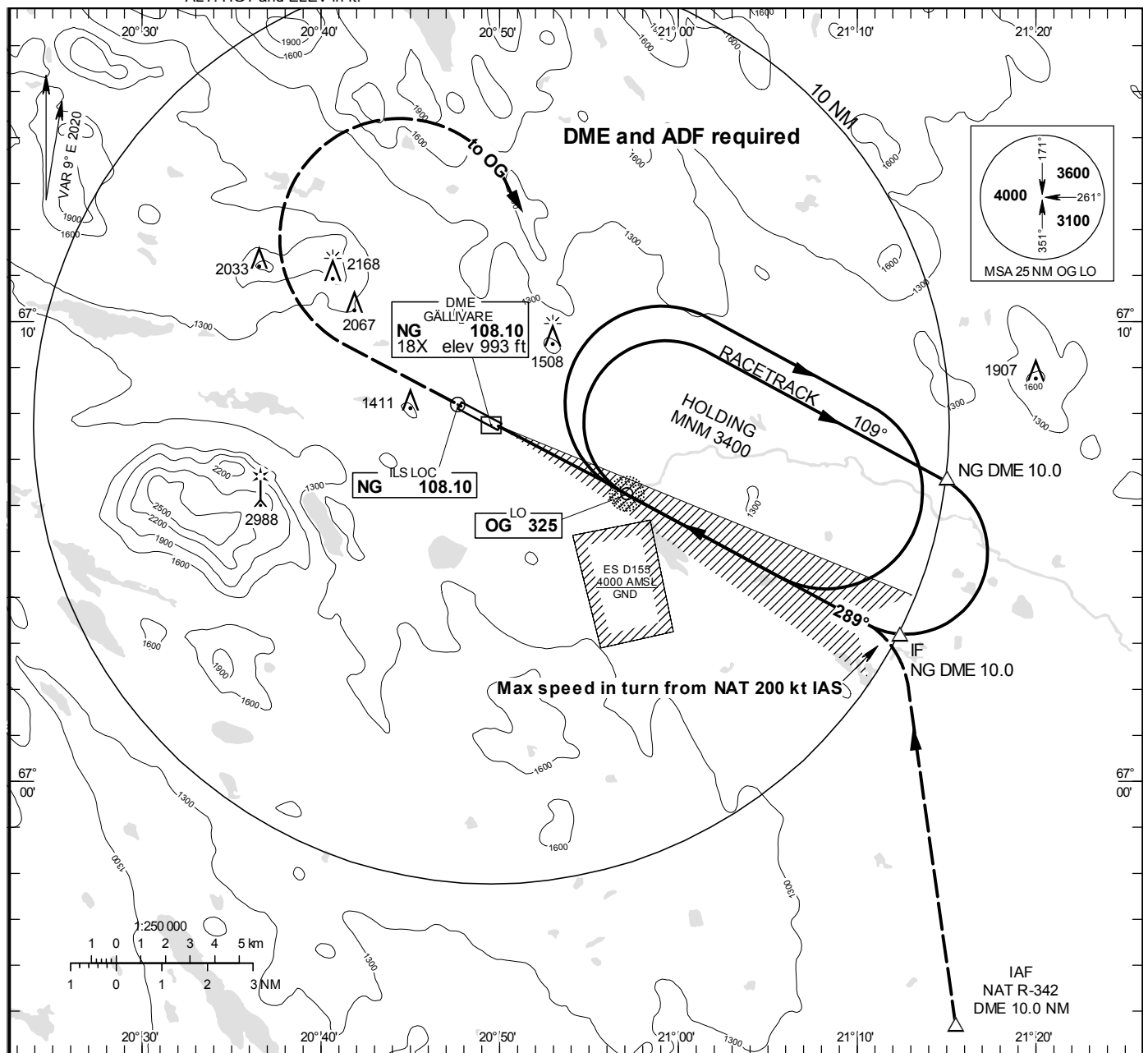


**GÄLLIVARE****ILS or LOC RWY 30****INSTRUMENT  
APPROACH  
CHART – ICAO****THR ELEV 971.0 ft, AD ELEV 1027 ft**

OGH are related to THR.  
Circling OCH are related to AD ELEV.  
BRG are MAG  
ALT. HGT and ELEV in ft.

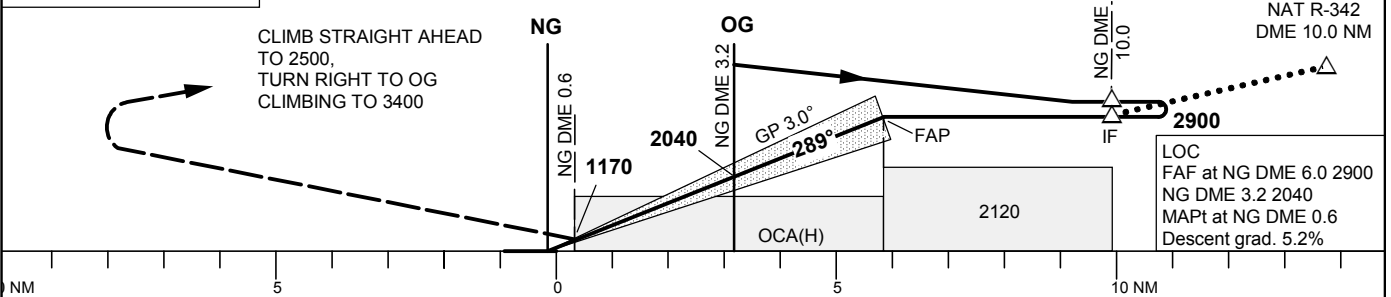
GÄLLIVARE  
INFORMATION

122.330



TA 5000 ft AMSL RDH 49.2 ft Max speed within racetrack 220 kt IAS \*Timing not authorized for defining the MAPt

OM replaced by NG DME 3.2  
MM replaced by NG DME 0.6



OCA (H)				Final approach LOC Distance FAF-MAPt 5.4 NM*						
Cat of ACFT	A	B	C	NG DME NM	5	4	3	2		
Straight-in Approach	CAT I	1184 (213)	1194 (223)	1206 (235)	ALT	2570	2250	1930	1610	
	LOC	1510 (540)	1530 (560)	1550 (580)	GS	kt 80	100	120	140	160
Circling		1710 (680)	1810 (780)	2470 (1440)	Time	min:s 4:05	3:16	2:43	2:20	1:49
					Rate of descent	ft/min 425	535	640	745	850

CHANGE: Editorial